



INTERNATIONAL  
**SCHOOL** OF  
**RIMINI**





INTERNATIONAL  
**SCHOOL** OF  
**RIMINI**

## Contents

---

- 1**      [Welcome from our Head of School](#)
- 2**      [ISR Vision and Mission](#)
- 3**      [About ISR](#)
- 4**      [Our Community](#)
- 6**      [IB PYP at ISR](#)
- 8**      [IB Learner Profile](#)
- 9**      [2023/2024 School's Calendar](#)
- 10**     [2023/2024 Fees](#)
- 11**     [Admission Process](#)
- 12**     [FAQ](#)



# WELCOME FROM OUR HEAD OF SCHOOL

I am delighted to welcome you to discover the International School of Rimini (ISR), where we aspire to develop students who make an active contribution as they take their place in our ever-evolving global society.

We have an ethos of open-mindedness at our school and the atmosphere that you will encounter on campus is one of care, compassion and community. Our young learners are placed in the center of everything that we do.

Underpinned by the International Baccalaureate Primary Years Programme (IB PYP), we strive for academic excellence empowered by inquiry-led learning that creates a dynamic and active process, where students develop skills and conceptual understanding, which they can transfer and apply to different contexts and construct meaning from their experiences.

By knowing our students well, we are able to personalize learning and to focus on the individual child's progress, helping each and everyone reach their potential.

Every day we appeal to our students' innate curiosity, we give them voice and choice, and we engage them and challenge them to take ownership of their own learning. We foster our students in a safe, inclusive and nurturing environment, helping them develop into respectful and empathetic individuals equipped with the essential life skills of collaboration, critical and creative thinking, self-management and communication. We aim to make their time at school rich, authentic, happy and purposeful.

I hope you enjoy reading more about what makes learning at ISR unique, and even better, if you come to us to experience it for yourself.

Sincere regards,  
*Janecke Aarnaes*  
Head of School

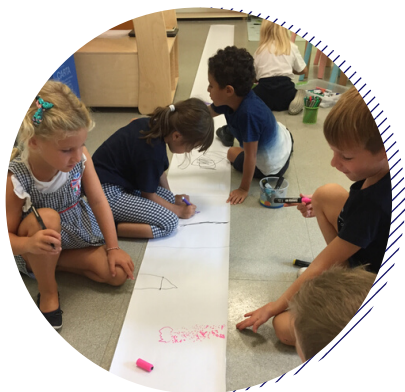


# Our Vision

ISR will develop lifelong learners who are open-minded and empathetic global citizens, equipped with the skills needed to enable them to take action to create a just and sustainable world.

.....

ISR svilupperà lifelong learners che siano cittadini del mondo empatici e di vedute aperte, e che dispongano delle capacità necessarie a permettere loro di agire attivamente al fine di creare un mondo giusto e sostenibile.



# Our Mission

The mission of the International School of Rimini is to provide a supportive, inclusive and challenging environment that enables all students to reach their full potential. The curriculum will prepare students to meet the challenges of an ever-evolving global society. We strive to equip our students with the knowledge, skills, concepts, values, and self-awareness to undertake a positive role in the world. To achieve this end, we aim to develop independent, confident, collaborative, creative, respectful and resilient lifelong learners. We will utilise Rimini, and the surrounding areas, as learning environments and encourage students to engage in local community events and sustainability projects.

.....

La missione della International School of Rimini è quella di fornire un ambiente inclusivo, stimolante e di supporto che permetta a tutti gli studenti di raggiungere il loro pieno potenziale. Il programma preparerà gli studenti ad affrontare le sfide di una società globale in perenne evoluzione. Ci impegniamo a dotare i nostri alunni di conoscenze, competenze, concetti, valori e auto-consapevolezza necessari a svolgere un ruolo positivo nel mondo. Per realizzare ciò, miriamo a sviluppare lifelong learners indipendenti, sicuri, collaborativi, creativi, rispettosi e resilienti. Rimini e le aree circostanti diventeranno luoghi di apprendimento e incoraggeremo gli studenti a prendere parte agli eventi della comunità locale e a progetti di sostenibilità.

# ABOUT ISR

ISR, the first and only IB World School in Romagna, was founded in 2018, offering a truly global education.

The International School of Rimini (ISR) opened in 2018 and it is located in Vicolo Santa Chiara 40, in Rimini city centre.

ISR collaborates with the International School of Bologna (ISB).

ISR welcomes Early Years Reception, Kindergarten and Transition classes (3-4, 4-5 and 5-6 yrs), and all Elementary classes from Grade 1 to Grade 5.

From the 2023/2024 academic year, ISR will be adding Secondary School, starting with Grade 6 and adding year on year to Grade 10.

The school is open Monday to Friday from 8.30am until 3.30pm.

The school day starts at 8.50am.

All subjects are taught by passionate educators.

The language of instruction is English, except for Italian classes.

International School of Rimini is an authorized IB World School for the PYP.

.....

La International School of Rimini (ISR) ha iniziato il suo percorso educativo nel 2018 ed è situata in Vicolo Santa Chiara 40, nel centro storico di Rimini.

ISR collabora con l'International School of Bologna (ISB).

ISR ospita le classi di Early Years Reception, Kindergarten e Transition (3-4, 4-5 e 5-6 anni), e tutte le classi di scuola elementare da Grade 1 a Grade 5. Dall'a.s. 2023/24, ISR attiverà le classi di Scuola Media, con l'apertura di Grade 6 a settembre 2023, aggiungendo un nuovo Grade ogni anno fino al Grade 10.

La scuola è aperta dal lunedì al venerdì dalle 8.30 alle 15.30. La giornata scolastica ha inizio alle ore 8.50.

Tutte le discipline scolastiche vengono insegnate da docenti competenti e appassionati.

La lingua d'istruzione è l'inglese, eccetto per le lezioni di Italiano.

L'International School of Rimini è una IB World School autorizzata per il Primary Years Programme (PYP).

# Our Community

## Location

ISR is situated in the heart of Rimini Old Town, near Arco d'Augusto, one of Rimini's most remarkable landmarks.

The convenient location allows many students to walk to school, and the school takes pride in its use of the city as a learning environment.



## Faculty

The faculty and staff represent 8 nationalities and speak 8 languages, bringing a truly international perspective to the ISR Community. All educators are internationally experienced qualified teachers.

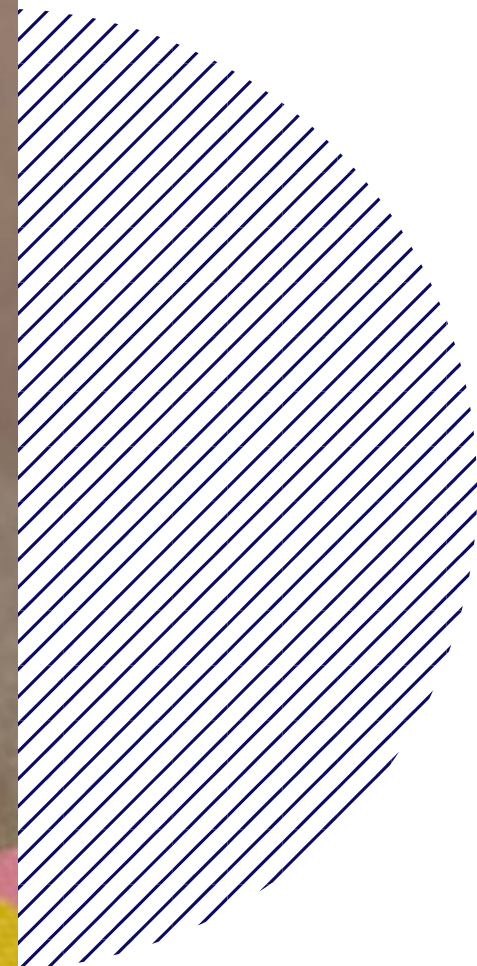


## The Wider Community

Rimini is a major international tourist destination and seaside resort, among the most famous ones in Europe and the Mediterranean basin, thanks to a long sandy beach, well-equipped bathing establishments, theme parks, and a number of opportunities for leisure and spare time.

## School Community

The current student population numbers 40 learners, of which about 20% belong to families who moved to the Rimini area for work.  
14 languages are spoken among our student community.



# IB PYP at ISR

## Curriculum Overview

ISR is an authorized IB World School for the Primary Years Programme (PYP).

The PYP is an authentic inquiry-based learning and teaching programme that is engaging, significant, challenging and relevant. The programme offers an inquiry-based and concept-driven transdisciplinary model of learning and teaching, supported by a strong understanding of how students learn.

PYP students develop knowledge, conceptual understandings, skills and the attributes of the IB learner profile to make a positive difference in their own lives, their communities, and beyond. Students also demonstrate the agility and imagination to respond to new and unexpected challenges and opportunities and to take action for a better and more peaceful world.

### The Pillars of the PYP

The transdisciplinary model extends across all three pillars of the PYP curriculum framework: the learner, learning and teaching, and the learning community.

**The learner:** describes the outcomes for individual students and the outcomes they seek for themselves.

**Learning and teaching:** articulates the distinctive features of learning and teaching.

**The learning community:** emphasises the importance of the social outcomes of learning and the role that IB communities play in achieving these outcomes.



\*All information related to the IB PYP are available only in English, as English is the language of instruction.



# IB PYP at ISR

## Transdisciplinary Programme

At ISR we have collaboratively developed a Programme of Inquiry to reflect the unique aspects of our school's community. The Programme of Inquiry is organised and framed by six transdisciplinary themes:

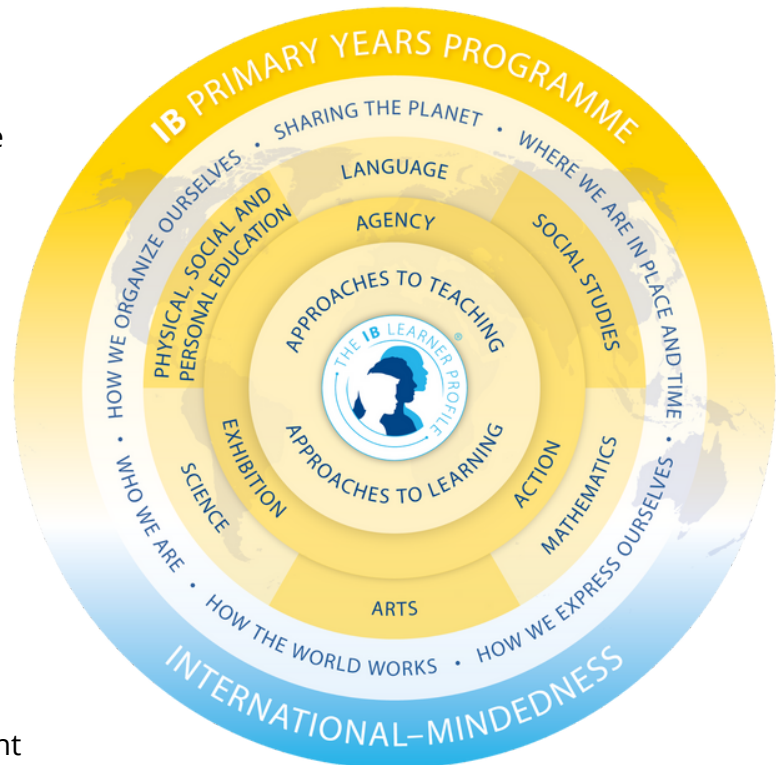
- Who we are
- Where we are in place and time
- How we express ourselves
- How the world works
- How we organize ourselves
- Sharing the planet

These transdisciplinary themes together provide children with authentic learning experiences that are not confined to the boundaries of traditional subjects. Although subjects play an important role in learning, PYP learners explore real-world problems by going beyond subject boundaries.

Students have opportunities to reflect on the significance of their learning to take meaningful action in their community and the wider world.

Each unit of inquiry enables the students to dive into significant, lasting and transferable understandings that are considered valuable for life. These enduring concepts are called Central Ideas.

Each class, from Transition onwards, addresses six units of inquiry per year, which generally run for about six weeks. The Early Years classes engage with four units per year which generally run for longer periods, and may last across the whole year or semester. Together these units represent ISR's Programme of Inquiry (POI).







# 2023/2024 School's Calendar

## 5 September

First Day of School/Primo giorno di scuola

## 11 October

Half Day of School | Professional Development Day

## 30 October - 3 November

Half Term Holiday/Vacanze di metà termine

## 8 December

Festa dell'Immacolata Concezione - National Holiday

## 25 December - 5 January

Winter Holidays/Vacanze invernali

## 2 February

Professional Development Day

## 26 February - 1 March

Half Term Holiday/Vacanze di metà termine

## 20 March

Half Day of School | Professional Development Day

## 1 - 5 April

Easter Holiday/Vacanze pasquali

## 25 - 26 April

Festa della Liberazione - National Holiday

## 1 May

Labour Day/Festa dei Lavoratori

## 25 June

Last Day of School/Ultimo giorno di scuola

# 2023/2024 FEES



## SCHEDULE AND EXPLANATION OF THE SCHOOL FEES

The International School of Rimini Fees are established annually by the Board of Governors.

### ISR FEES FOR THE 2023/2024 ACADEMIC YEAR

#### ADMISSION FEE

For new students only, due upon initial enrolment. The Admission fee is non-refundable.

Reception	€700,00
Kindergarten	€700,00
Transition	€700,00
Grade 1, 2, 3, 4, 5	€800,00
Grade 6	€1.000,00

#### REGISTRATION FEE

For new and returning students, due annually upon enrolment. The Registration fee is non-refundable.

Reception	€700,00
Kindergarten	€700,00
Transition	€700,00
Grade 1, 2, 3, 4, 5	€800,00
Grade 6	€800,00

#### ANNUAL TUITION FEES

Reception (Half day)	€7.755,00
Reception (Full day)	€8.988,00
Kindergarten	€9.213,00
Transition	€13.125,00
Grade 1	€14.883,00
Grade 2, 3, 4	€16.023,00
Grade 5	€16.815,00
Grade 6	€17.394,00

#### LUNCH FEE

The full service is mandatory up to Grade 6. No refunds will be made for absences, illnesses, or days the school is closed.

Lunches	€1.515,00
---------	-----------

### DISCOUNTS FOR THE 2023/2024 ACADEMIC YEAR

#### SIBLING DISCOUNT

Second child	10% on Annual Tuition fee
Third child	20% on Annual Tuition fee
Fourth+ children	30% on Annual Tuition fee

## FEES POLICY

#### PAYMENTS

The Admission and Registration Fees are non-refundable and due upon enrolment.

The Annual Tuition Fee can be paid in three instalments, as follows:

- 1st September: 50% of the Annual Tuition Fee
- 1st November: 35% of the Annual Tuition Fee
- 1st February: 15% of the Annual Tuition Fee

The Lunch Fee can be paid in three instalments, as follows:

- 1st September: 50% of the Lunch Fee
- 1st November: 35% of the Lunch Fee
- 1st February: 15% of the Lunch Fee

A surcharge of €200.00 will be applied after the 15th day of any overdue payment.

Fees payments are accepted only via bank transfer.

#### Bank Details:

International School of Rimini srl

Bank: Crédit Agricole

Branch location: Cerasolo (RN)

IBAN: IT27W0623067771000030111962

The following policies take into account that ISR plans and allocates funds for the academic year in advance, based on full year enrollments.

#### LATE ADMISSION

For students who enrol after the first day of school of the academic year.

The Admission and Registration Fees are always due in full.

In the case of Late Admission, the Lunch Fee will be calculated pro-rata (month-basis).

- If a student starts any time from September to the end of January, the whole Annual Tuition Fee for the entire year will be payable.
- If a student starts any time from February to April, 60% of the Annual Tuition Fee will be payable.
- If a student starts any time in May and June, 35% of the Annual Tuition Fee will be payable (*minimum fee*).

#### EARLY WITHDRAWAL

The Admission and Registration Fees are always due in full.

- If a student must withdraw any time from September to the end of October, 50% of the Annual Tuition and Lunch Fees will be payable.
- If a student must withdraw any time from November to the end of January, 85% of the Annual Tuition and Lunch Fees will be payable.
- If a student must withdraw any time from February to June, 100% of the Annual Tuition and Lunch Fees will be payable.

In the case of Early Withdrawal, if the family does not notify the School's Office in writing respecting a 1-month notice period, the next tuition installment will be considered payable.

#### SHORT PERIOD ENROLMENT

The school can accommodate families who relocate for a fixed period shorter than 3 months. In this scenario, each application will be evaluated case-by-case. The Admission and Registration Fees are always due in full. The minimum fee applied is 35% of the Annual Tuition Fee. The Lunch Fee will be calculated pro-rata (month-basis).

#### FEES DO NOT INCLUDE

The fees above do not include uniforms, exams, After-School Clubs, or field trip fees. These will be invoiced separately, when applicable.



# Admission Process Iscrizioni

**Family visits for an inquiry meeting.**

*La famiglia visita la scuola per un incontro conoscitivo.*



**During the school year, the student may attend a trial session.**

*Durante l'anno scolastico, l'alunno/a può frequentare una sessione di prova.*



**Family decides to apply.**

*La famiglia decide di effettuare l'iscrizione.*

**Family submits documents:**

*Sono richiesti i seguenti moduli:*

- ✓ **Completed Registration Form/**  
*Modulo d'iscrizione completato;*
- ✓ **Parent Declaration of Good Health/Parental Responsibility Illness/**  
*Autocertificazione dello stato di buona salute/malattia;*
- ✓ **Photograph Use Form/**  
*Liberatoria Fotografica;*
- ✓ **Permission to Collect Students/**  
*Delega per il ritiro;*
- ✓ **Copy of the student's Vaccination Record/**  
*Copia del certificato vaccinale;*
- ✓ **Copy of parents and students' IDs, including Codice Fiscale/ISS.**  
*Copia dei documenti di identità dei genitori e degli alunni, Codice Fiscale/ISS.*



**Payment of Admission and Registration Fees upon enrollment.**

**Payment of Annual Tuition Fee and Lunch Fees as per Fees Policy.**

*Pagamento delle quote di Ammissione e Registrazione all'iscrizione.*

*Pagamento della Retta Annuale e della Quota Pranzi secondo la Fees Policy.*

# Frequently Asked QUESTIONS:

## When is the application deadline?

Enrolment applications for September entry should be submitted by 31st March. However, as we are an international school, applications are accepted all year round and are subject to availability.

## What is the birthday cut-off date for entry in Early Years class?

Birth date entry is by 31st December for each class level. To enter the first year of Early Years, a child must be three years old by 31st December. ISR does not accept requests to 'anticipate' students as per the Italian education system.

## What is the school year?

The school year runs from end of August/early September to late June.

## What are the school hours?

The school runs Monday through Friday. Children may enter from 8:30am. Lessons start at 8:50am. The end of school day is at 3:30pm.

## Is there a school uniform?

Students are required to wear at least one piece of ISR uniform every day and to comply with the school's colours - white and navy blue. The students are to wear closed shoes only, no open-toed sandals or flip-flops are allowed. The uniform items are to be ordered from the company website: [www.tempoimperfetto.it](http://www.tempoimperfetto.it). A complete change of clothing should be provided for students in Early Years classes.

## What is the school lunch?

The school lunch and snacks are provided by Diapason. Every ingredient is certified organic. The menu follows the diet requirements set by AUSL. If a student has special dietary requirements, a medical certificate is required. Students cannot bring food from home.

## Is Italian taught?

Italian is taught from the last year of Early Years (5 years) for one session a week. Students in Elementary School have four or five Italian a week, depending on the grade level. In the Elementary School, the focus is on the development of speaking, reading and writing skills, as students 'learn about language' as well as 'learning through language', following the Italian ministerial outcomes (MIUR). All other subjects are taught in English.

## Where is the school's campus?

ISR is located near Arco di Augusto, in Vicolo Santa Chiara 40. The school has a private parking area.

## Qual è l'ultima data utile per l'iscrizione?

Per le ammissioni di settembre, è richiesto l'invio dei documenti di iscrizione entro il 31 Marzo. Ciononostante, essendo una scuola internazionale, all'ISR le ammissioni sono aperte tutto l'anno, in base alla disponibilità dei posti.

## Da quale età si può essere ammessi alla classe di Early Years (scuola dell'infanzia)?

La classe di Early Years ospita alunni dai 3 ai 5 anni. Ai fini dell'ammissione a Reception, l'alunno/a dovrà compiere 3 anni entro il 31 dicembre dell'anno di iscrizione. ISR non ammette l'iscrizione di alunni anticipatari, come invece previsto dal sistema scolastico italiano.

## Quando inizia e termina l'anno scolastico?

L'anno scolastico comincia a fine agosto/inizio settembre e termina a fine giugno.

## Quali sono orari e giorni di frequenza?

La settimana scolastica va da lunedì a venerdì. Gli alunni possono entrare a scuola a partire dalle ore 8:30. Le lezioni iniziano alle ore 8:50. La giornata scolastica termina alle ore 15:30.

## È richiesta una uniforme?

Agli alunni è richiesto di indossare almeno un capo con logo ISR e indossare indumenti nei colori dell'uniforme - bianco e blu navy. Agli studenti è richiesto di indossare scarpe chiuse, non sono permessi sandali dalla punta aperta o infradito. I genitori ordinano i capi dell'uniforme dal sito del fornitore: [www.tempoimperfetto.it](http://www.tempoimperfetto.it). Per gli alunni di Early Years è richiesto un cambio completo di indumenti da tenere a scuola.

## In cosa consiste il pranzo scolastico?

Il pranzo e gli spuntini vengono forniti da Diapason. Ogni ingrediente è certificato biologicamente. Il menù segue le indicazioni dell'AUSL. Qualora lo/la studente/ssa seguisse un particolare regime alimentare, è richiesto il relativo certificato medico. Gli alunni non portano il proprio cibo da casa.

## Viene insegnato l'italiano?

Le lezioni di Italiano sono impartite a partire dall'ultimo anno di Early Years (5 anni) per una sessione alla settimana. Gli alunni di scuola elementare hanno quattro o cinque sessioni di Italiano a settimana, a seconda della classe. Nella scuola elementare, l'obiettivo è sviluppare le competenze orali, di lettura e scritte, e l'alunno "impara la lingua" mentre "impara attraverso la lingua", perseguendo gli obiettivi di indicazione ministeriale (MIUR).

## Dove si trova la scuola?

ISR si trova vicino all'Arco di Augusto, in Vicolo Santa Chiara 40. La scuola ha a disposizione un parcheggio interno privato.



INTERNATIONAL  
SCHOOL  
OF  
RIMINI



# Take your place in the world

## ISR Contact Information

Email: [info@isrimini.com](mailto:info@isrimini.com)

Telephone: +39 0541 786129

Mobile: +39 371 4586252

Vicolo Santa Chiara 40 - 47921 Rimini



[www.isrimini.com](http://www.isrimini.com)



[International School of Rimini](https://www.facebook.com/InternationalSchoolofRimini)



[internationalschoolofrimini](https://www.instagram.com/internationalschoolofrimini)